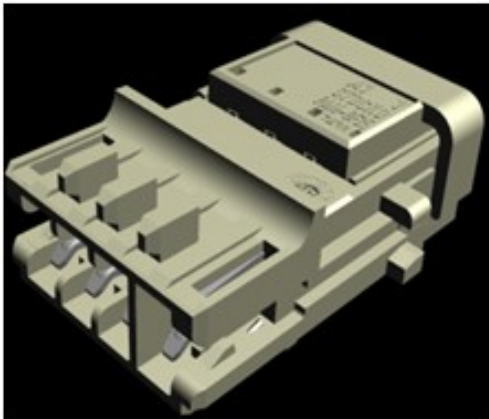


# Data sheet

**Preversion**  
This document is not released yet.  
We reserve the right to alter  
technical details.



## STOCKO Direct- and indirect connector ECO-TRONIC CRIMP / MHVV 7434 / MHVV 7438 / MHVV 7442



### Technical data<sup>1)</sup>

#### Dimensions / Design

Positions	2 – 12 (max. 20 on request)
Pitch	2.5 mm / 5.0 mm (partly loaded)
Dimensions (LxWxH)	referred to drawing
Termination	Crimp
Contact	RFB 8408 + variations
Positioning	yes (look at drawing)
Polarizing	yes (look at drawing)
PCB-locking	yes.
Secondary locking of the contacts	yes
Safety class	IP 00
Wire outlet	180°
Type of wire	stranded
Wire size	0.22 / 0.35 mm <sup>2</sup>
Insulation diameter	< 1.4 mm

#### Possible male connectors

Indirect	ECO-TRONIC THR or SMT
Direct	FR4 double-sided
Thickness of PCB	1.5 ± 0.13 mm / 1.6 ± 0.13 mm

#### Mechanical data

Insert cycles	≤ 10 cycles with Sn/ Sn
Connector / mating partner	
- Insert force <sup>3)</sup>	F ≥ 3 N per contact
- Withdrawal force <sup>3)</sup>	F ≥ 2 N per contact
- Force of contact	F ≥ 2 N
Max. angle to insert	± 3
Locking force	
- Primary	F > 55 N
- Secondary	F > 55 N

### Description of system

- Direct- and indirect connector with crimp contacts
- Small place required also with high number of terminals
- Designed for the Automotive business
- Complex cable harness automatically producible
- Selectiv assembling possible
- Wire outlet 180°
- Pitch 2.5 mm
- Secondary lock
- housing MHVV 7434 without lock
- housing MHVV 7438 with passiv lock
- housing MHVV 7442 with activ lock

### Electrical data

Nom. voltage	32 V (pitch 2,5 mm)
Current rating	2 A @ 85 °C T <sub>amb</sub>

### Temperature range

Temperature of function <sup>2)</sup>	-40...+130 °C (+150 °C Ag)
Temperature of stock	-40...+70 °C

### Materials

Material of housing	PA66 V0 GF25 (WN 14.xxxx.xx)
Color of housing	natur
Material of contact	CuSn6 /CuNiSi
Surface of contact <sup>2)</sup>	Sn pre plated (sel. Ag / sel. Au on request)

### Approvals

see system validation  
(in preparation)

### Standards<sup>4)</sup>

VW 60330, LV214, USCAR2

<sup>1)</sup> Other alternatives of polarizing, wire size, variants of contour and material specified by customer on request.

<sup>2)</sup> The base materials of the system are for this temperature. The material and the plating of the contacts define the matching of contacts.

<sup>3)</sup> Reference values, measured with steel test adapter. Based on real combinations the values can be different.

<sup>4)</sup> in extracts / in dependence on

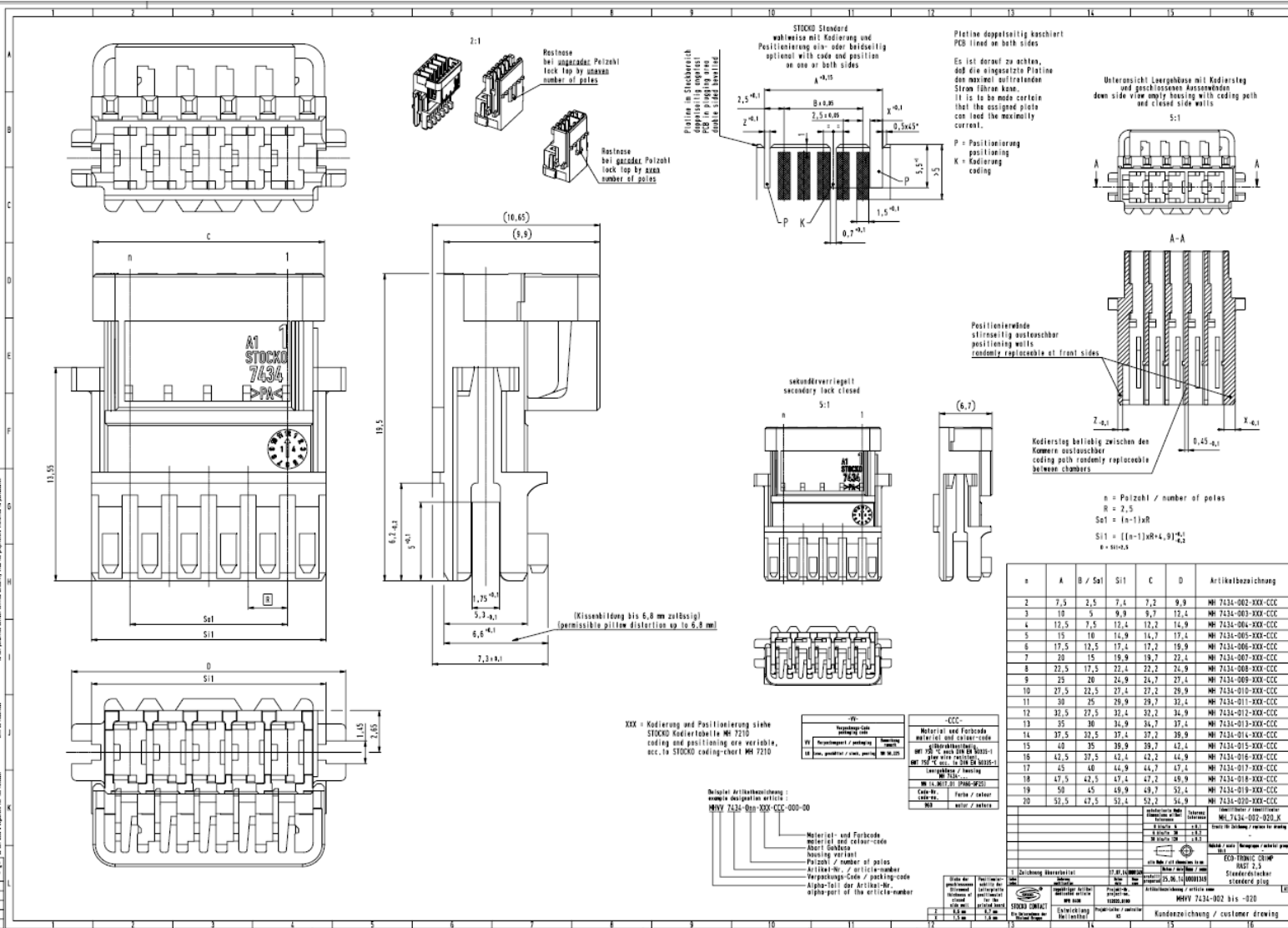
# Data sheet

**Preversion**  
 This document is not released yet.  
 We reserve the right to alter  
 technical details.



## STOCKO Direct- and indirect connector ECO-TRONIC CRIMP / MHVV 7434 / MHVV 7438 / MHVV 7442

### Housing without locking (MHVV 7434)\*\*



\*\* Other datas on request.

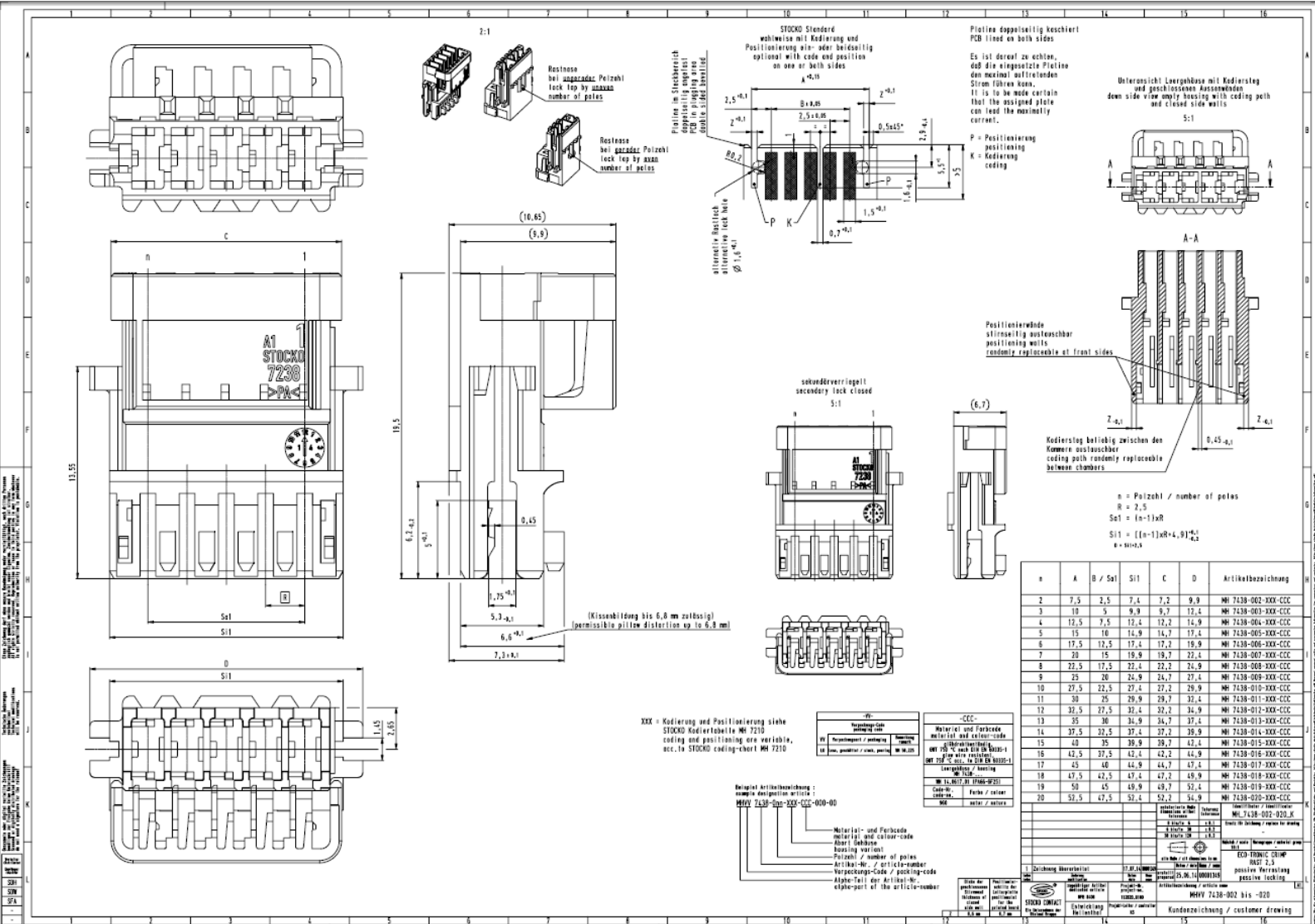


**Preversion**  
 This document is not released yet.  
 We reserve the right to alter technical details.

# Data sheet

## STOCKO Direct- and indirect connector ECO-TRONIC CRIMP / MHVV 7434 / MHVV 7438 / MHVV 7442

### Housing with passiv – locking (MHVV 7438)\*\*



\*\* Other datas on request.

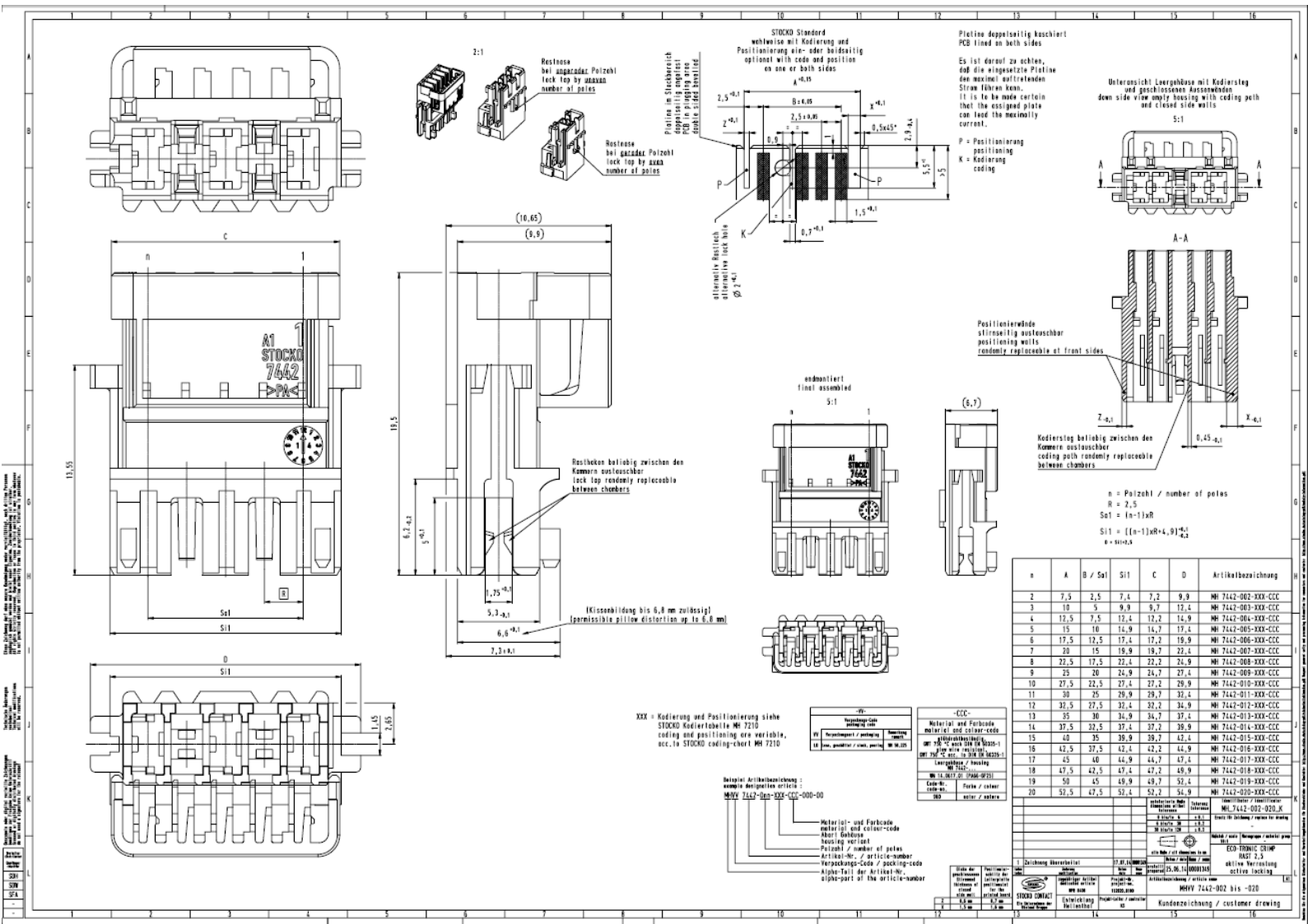
# Data sheet

**Preversion**  
 This document is not released yet.  
 We reserve the right to alter  
 technical details.



## STOCKO Direct- and indirect connector ECO-TRONIC CRIMP / MHVV 7434 / MHVV 7438 / MHVV 7442

### Housing with activ – locking (MHVV 7442)\*\*



\*\* Other datas on request.



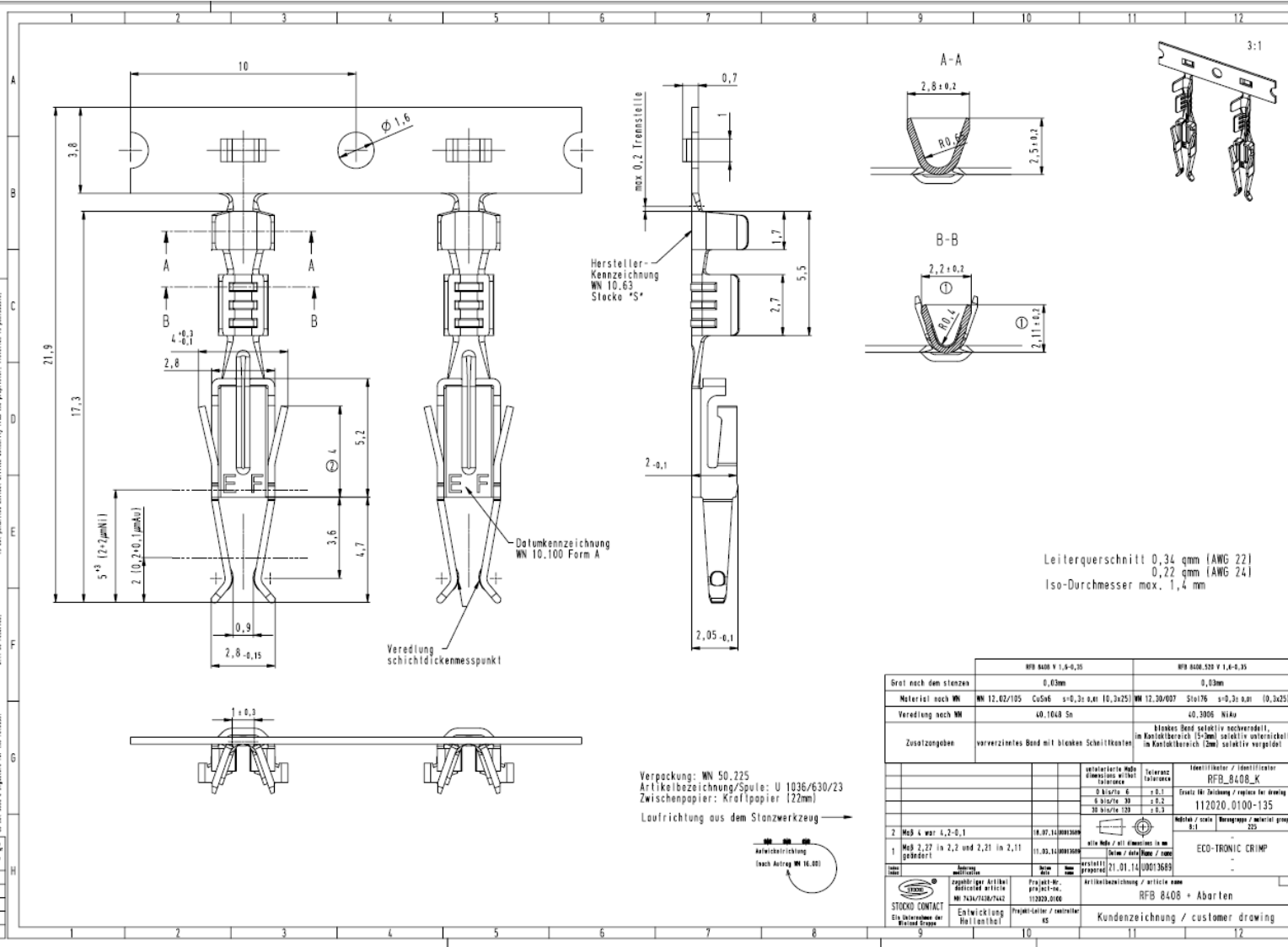
# Data sheet

**Preversion**  
 This document is not released yet.  
 We reserve the right to alter technical details.



## STOCKO Direct- and indirect connector ECO-TRONIC CRIMP / MHVV 7434 / MHVV 7438 / MHVV 7442

### Contact RFB 8408\*\*



\*\* Other datas on request.